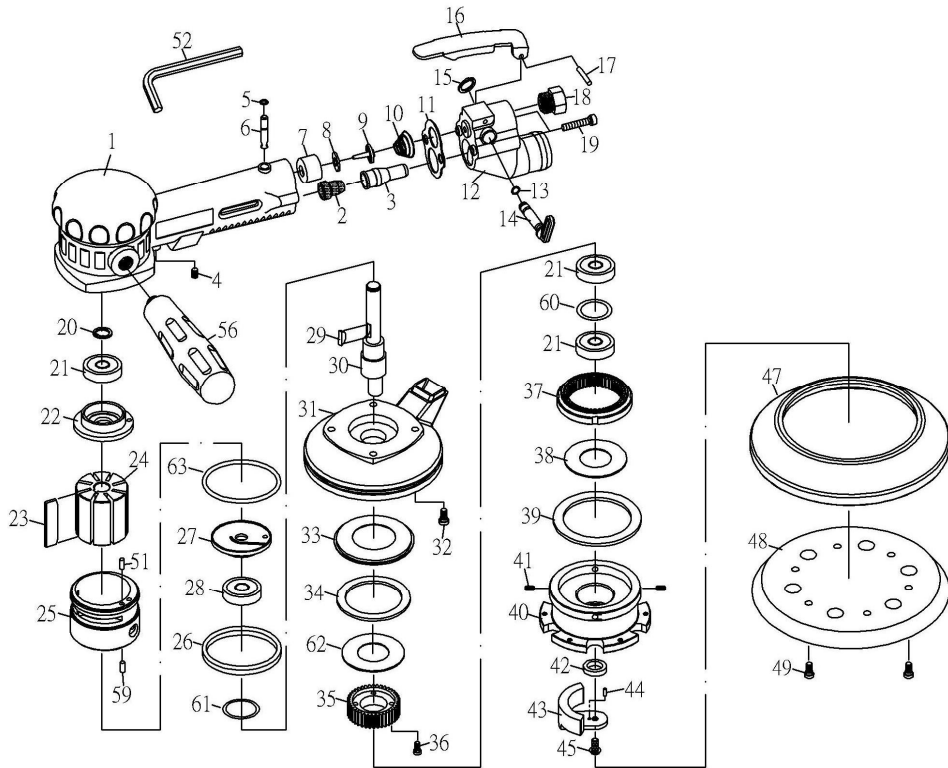


**Model No. A12-E2913C**

**8" 2-HAND GEAR-DRIVEN SANDER**



Part No.	Description	Q'ty	Part No.	Description	Q'ty	Part No.	Description	Q'ty
1	Housing	1	20	Snap Ring	1	39	Dustproof Washer	1
2	Cone Muffer	1	21	Bearing (6000zz)	3	40	Gear Seat	1
3	Muffer Body	1	22	Rear Plate	1	41	Screw	4
4	Screw	1	23	Rotor Blade	8	42	Bushing	1
5	O-Ring(3.5*1.4)	1	24	Rotor	1	43	Balancer	1
6	Valve Stem	1	25	Cylinder	1	44	Pin(2*10)	1
7	Bushing	1	26	O-Ring	1	45	Screw	1
8	Washer	1	27	Front Plate	1	47	Shroud	1
9	Valve	1	28	Bearing (6002zz)	1	48	Pad	1
10	Spring	1	29	Rotor Key	1	49	Screw	6
11	Packing	1	30	Motor shaft Balancer	1	51	Pin (3*12l)	1
12	Housing Back Seat	1	31	Housing Cover	1	52	Hex (3mm)	1
13	O-Ring	2	32	Screw	4	56	Handle	1
14	Regulator	1	33	Faceplate	1	59	Pin (3*8)	1
15	Snap Ring	1	34	Dustproof Washer	1	60	Washer	1
16	Lever	1	35	Gear	1	61	Washer	1
17	Pin(3*24l)	1	36	Screw(m3*10)	4	62	Washer	1
18	Air Inlet	1	37	Gear Link	1	63	O-Ring (as031)	1
19	Screw+Washer	2	38	Washer	1			